

StartUp PC Tool

User Manual



Revision

Release date of version 1.0: May 2020

- Initial distribution

Table of Contents

Contents

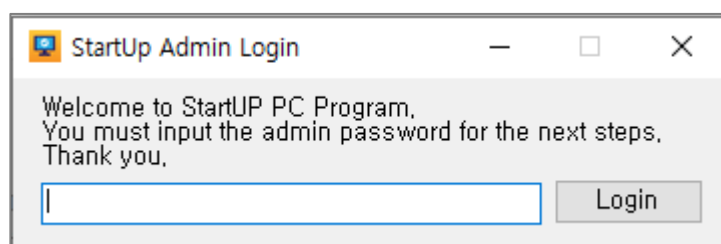
1.	HOW TO SETUP USING THE STARTUP PC TOOL.....	4
1.1	StartUp Admin Login.....	4
1.2	Making Profile.....	5
1.3	Bypass google Setup Wizard.....	6
1.4	Disable GMS Package	7
1.5	Setting Wi-Fi Access Point.....	8
1.6	File Download and install the mobicontrol.....	9
1.7	File Download 'mcsetup.ini' and copy to root folder.....	10
1.8	Enroll a device owner.....	11
1.9	Export Barcodes	12
2.	SET NEXT STEP USING STARTUP APP.....	14
2.1	Device boot.....	14
2.2	Wait 20 seconds in Setup Wizard state.....	14
2.3	Read all output StartUp Barcodes.....	15
2.4	Wait until setup is complete	15
2.5	Run Soti to verify the settings	15
3.	REBOOT/FACTORY RESET.....	16
3.1	Use the Setting Menu	16
3.2	Use the Hidden Menu.....	17

1. HOW TO SETUP USING THE STARTUP PC TOOL

Please follow the step-by-step settings of StartUp PC as shown below to automatically set the Soti in the factory reset state.

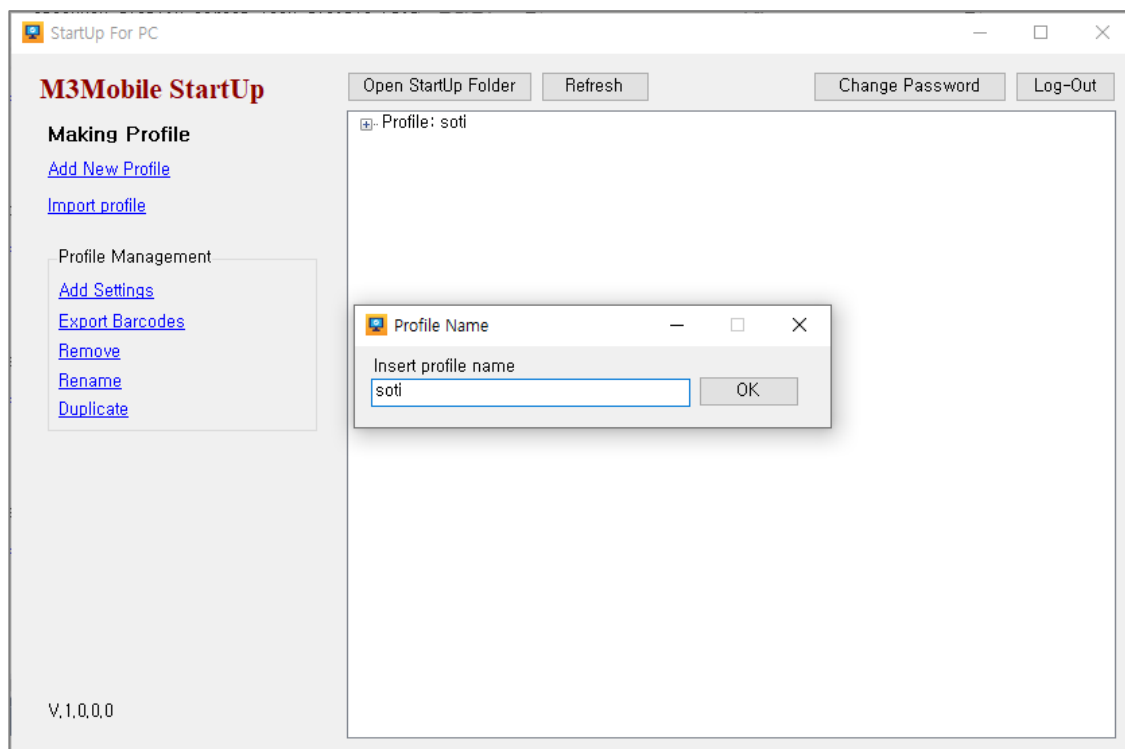
1. Bypass google Setup Wizard
2. Disable GMS Package
3. Setting Wi-Fi Access Point
4. File Download and install the mobicontrol
5. File Download 'mcsetup.ini' and copy to root folder
6. Enroll a device owner

1.1 StartUp Admin Login



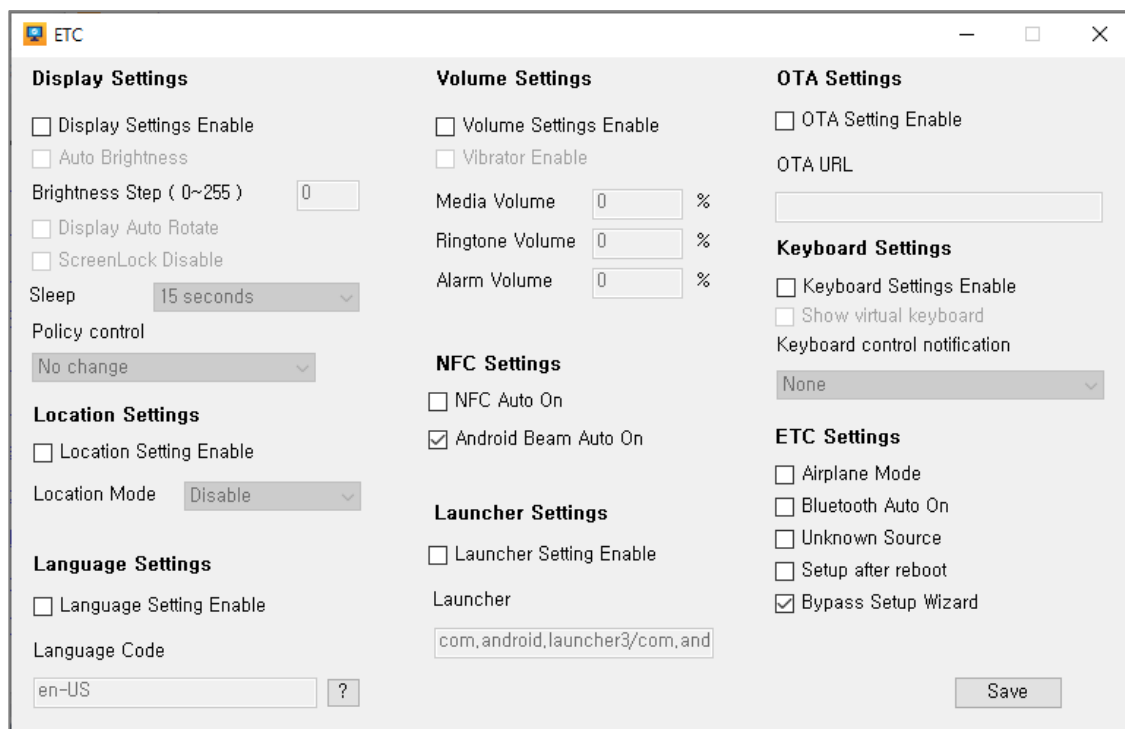
You can start the StartUp PC by entering the password.
The default password is 'mobile'.

1.2 Making Profile



- Add New Profile: Create a profile with the name you want.
Selecting a generated profile enables Profile Management.
- Add Settings: Add or manage settings for the selected profile.

1.3 Bypass google Setup Wizard

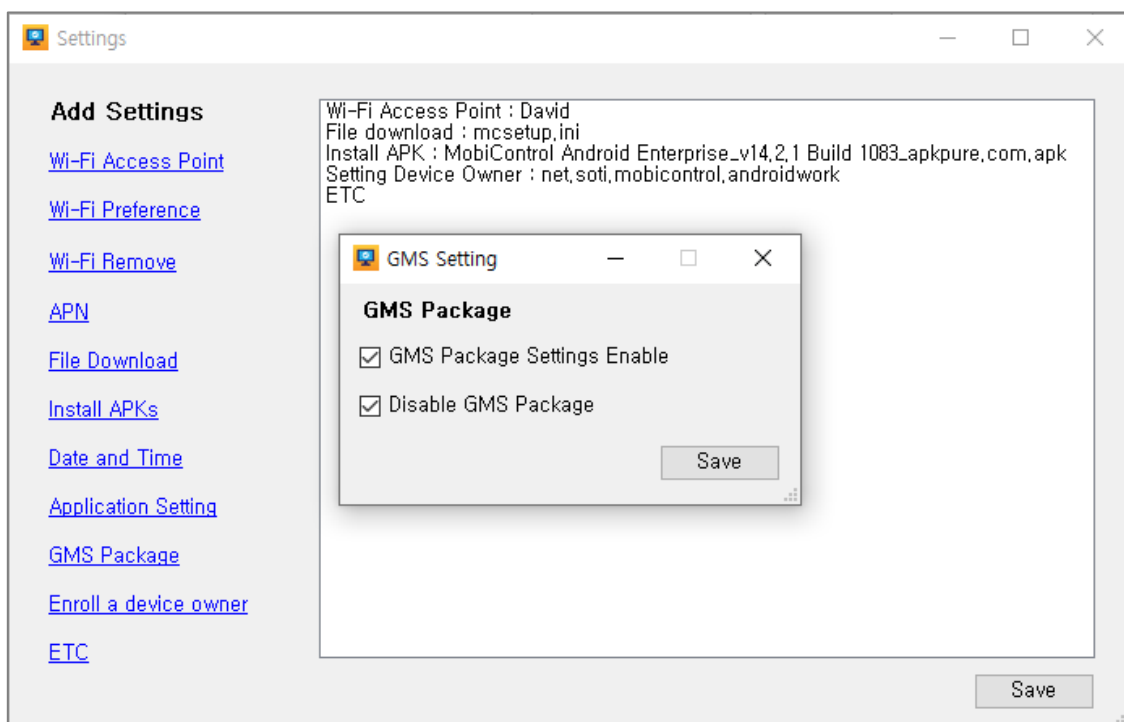


- Add Settings – ETC
- Uncheck the Setup after reboot.
- Check Bypass Setup Wizard.

ETC - Description	
<p><Display Settings></p> <ul style="list-style-type: none"> - Display Settings Enable: Allow Display Setting. - Auto Brightness: Brightness is adjusted by light condition automatically. - Brightness Step: Adjust Brightness. - Display Auto Rotate: Automatic display rotation between portrait and landscape. - ScreenLock Disable: Select to disable ScreenLock 	<p><Volume Settings></p> <ul style="list-style-type: none"> - Volume Settings Enable: Allows Volume Control when reboot. - Vibrator Enable: Enables Vibrator when reboot. - Media Volume: Media Volume can be controlled. - Ringtone Volume: Ringtone Volume can be controlled. - Alarm Volume: Alarm Volume can be controlled.

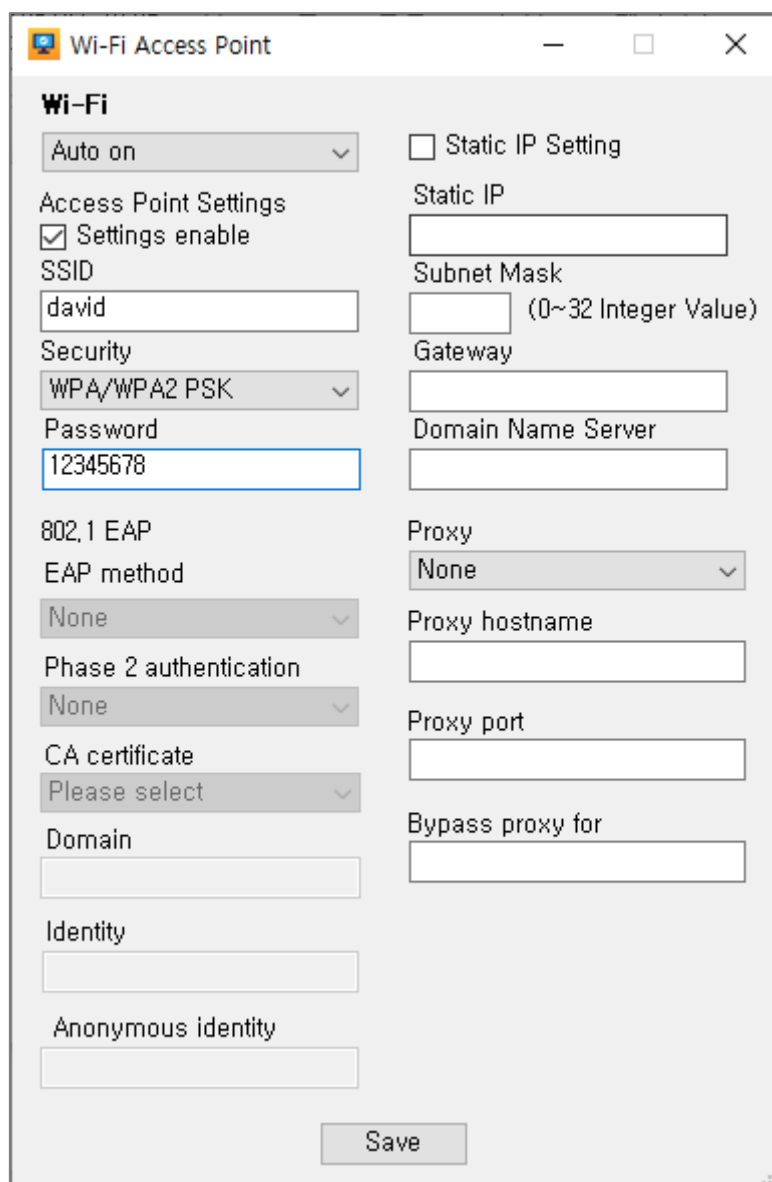
- Location Setting: Select the setting for current location	- NFC Settings: Select whether NFC and NFC beam will be used
- Language Settings: Select the language to use on your device	- OTA Settings: Set the URL to use when running OTA updates remotely.
<ETC Settings>	
- Airplane Mode: Turn on/off the airplane mode.	
- Bluetooth Auto on: Bluetooth Auto On when reboot.	
- Unknown source: Select the setting for allowing the unknown sources	

1.4 Disable GMS Package



- Add Settings – GMS Package
- Check the GMS Package Settings Enable
- Check the Disable GMS Package

1.5 Setting Wi-Fi Access Point



- Settings – Wi-Fi Access Point
- Set Wi-Fi to Auto on.
- Check the Settings enable in Access Point Settings
- Configure Wi-Fi suitable for your environment.

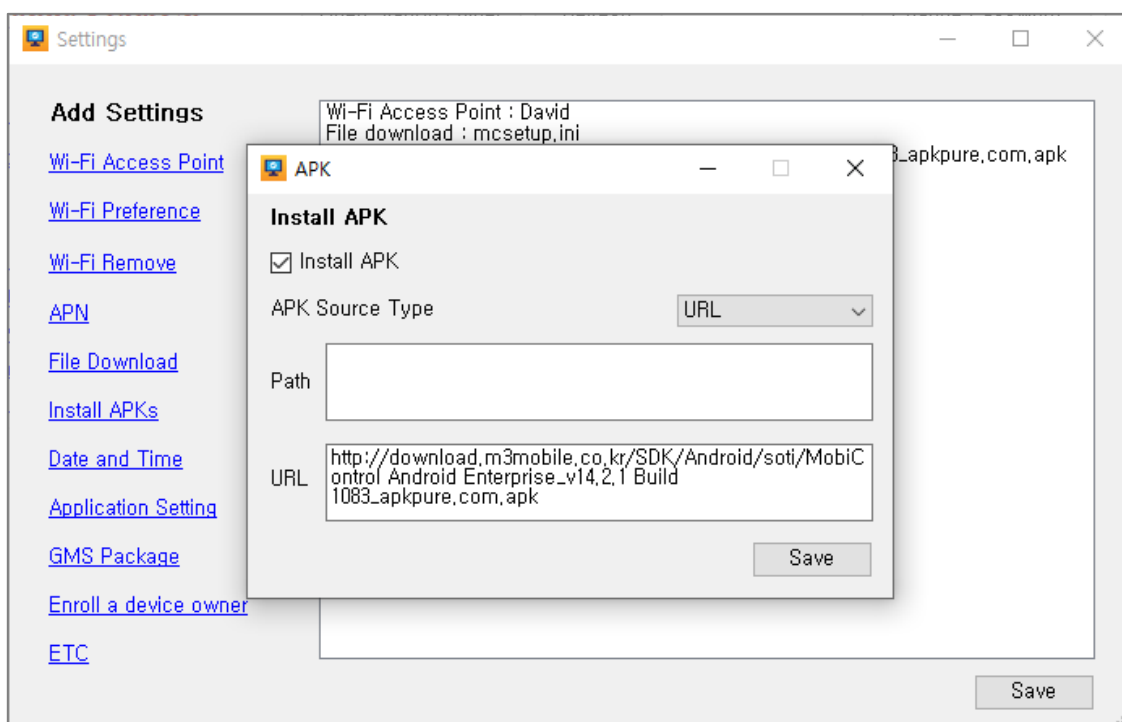
Wi-Fi Access Point - Description
<ul style="list-style-type: none">- Wi-Fi Auto on: Wi-Fi AutoOn when reboot.- Wi-Fi Settings enable: Select whether to apply the settings.- SSID: Access to SSID(Be careful of Upper/Lower case letter.)- Password: : Input PW for the SSID.

- Static IP Setting: Enable Static IP setting.
- Static IP: Input Static IP address
- Subnet Mask: Input Subnet Mask (0~32)

Notation	Netmask
0	0.0.0.0
8	255.0.0.0
16	255.255.0.0
24	255.255.255.0
25	255.255.255.128
32	255.255.255.255

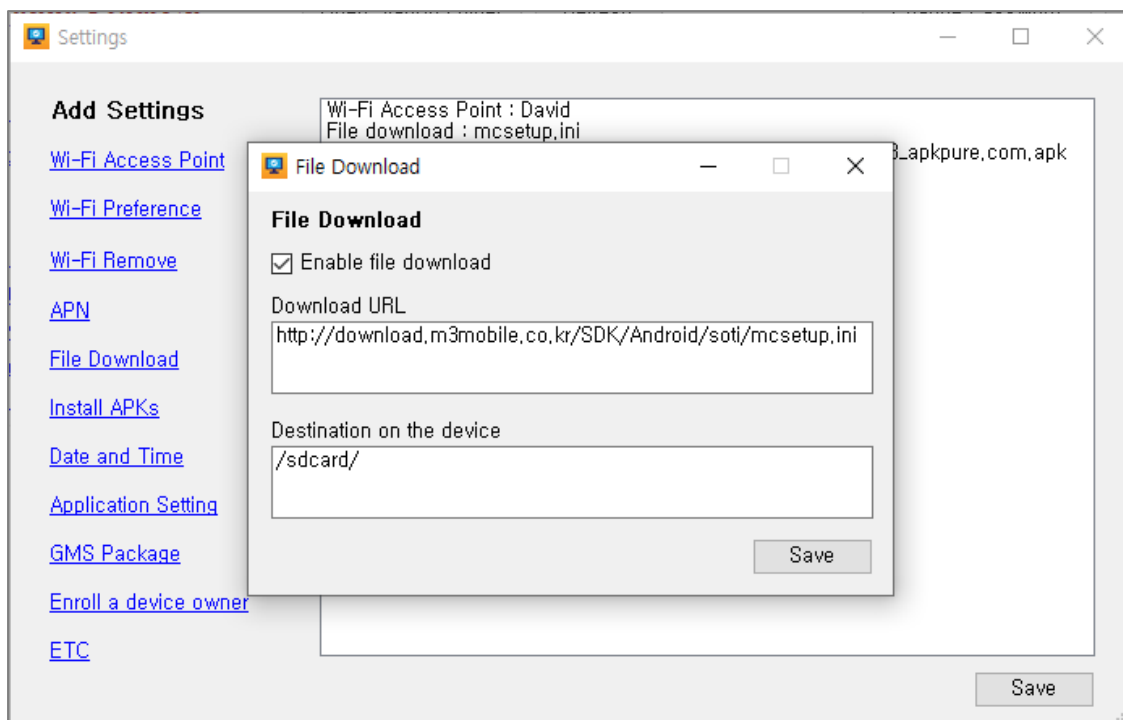
- Gateway: Input Gateway address.
- Domain Name Server: Input DNS address.

1.6 File Download and install the mobicontrol



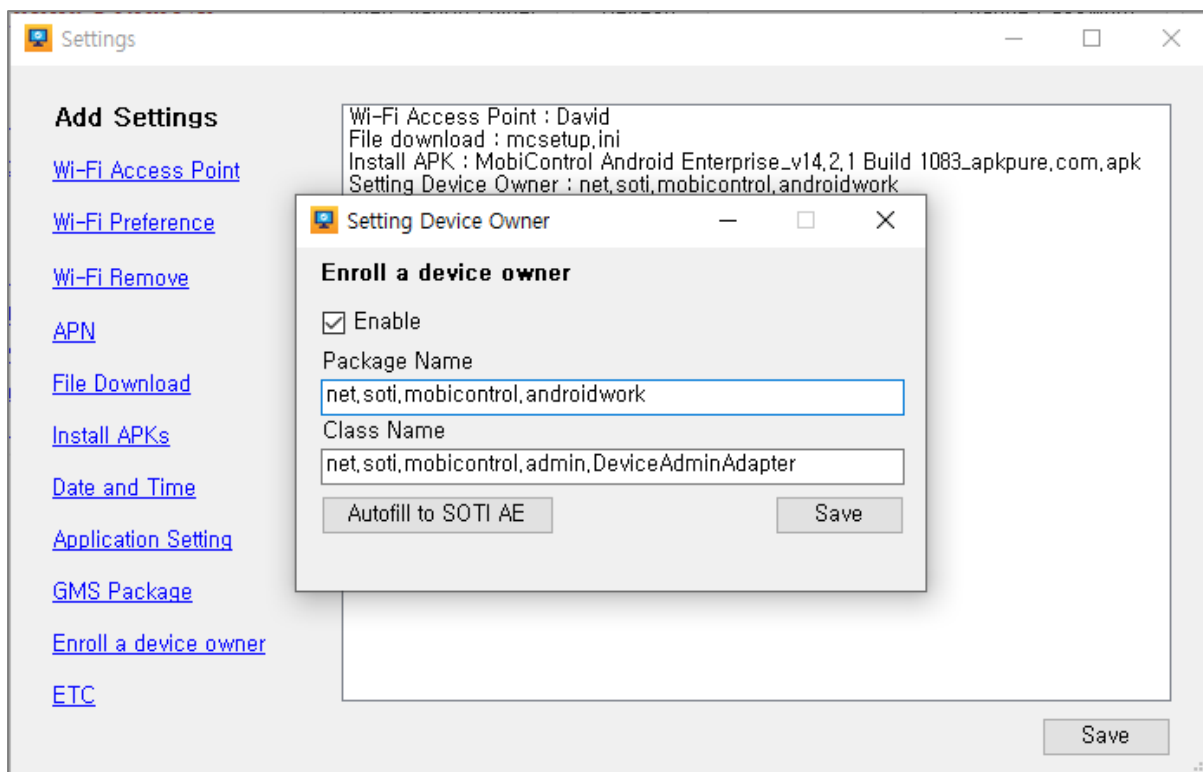
- Settings – Install APKs
- Check the Install APK.
- Select the APK Source Type as the URL.
- Enter the file location on the Web server in HTTP format in the URL box.

1.7 File Download 'mcsetup.ini' and copy to root folder



- Settings – File Download
- Check the Enable file download.
- Enter the location on the Web server in HTTP format in the Download URL.
- Enter the location where you want to download the file in the Destination on the device.

1.8 Enroll a device owner



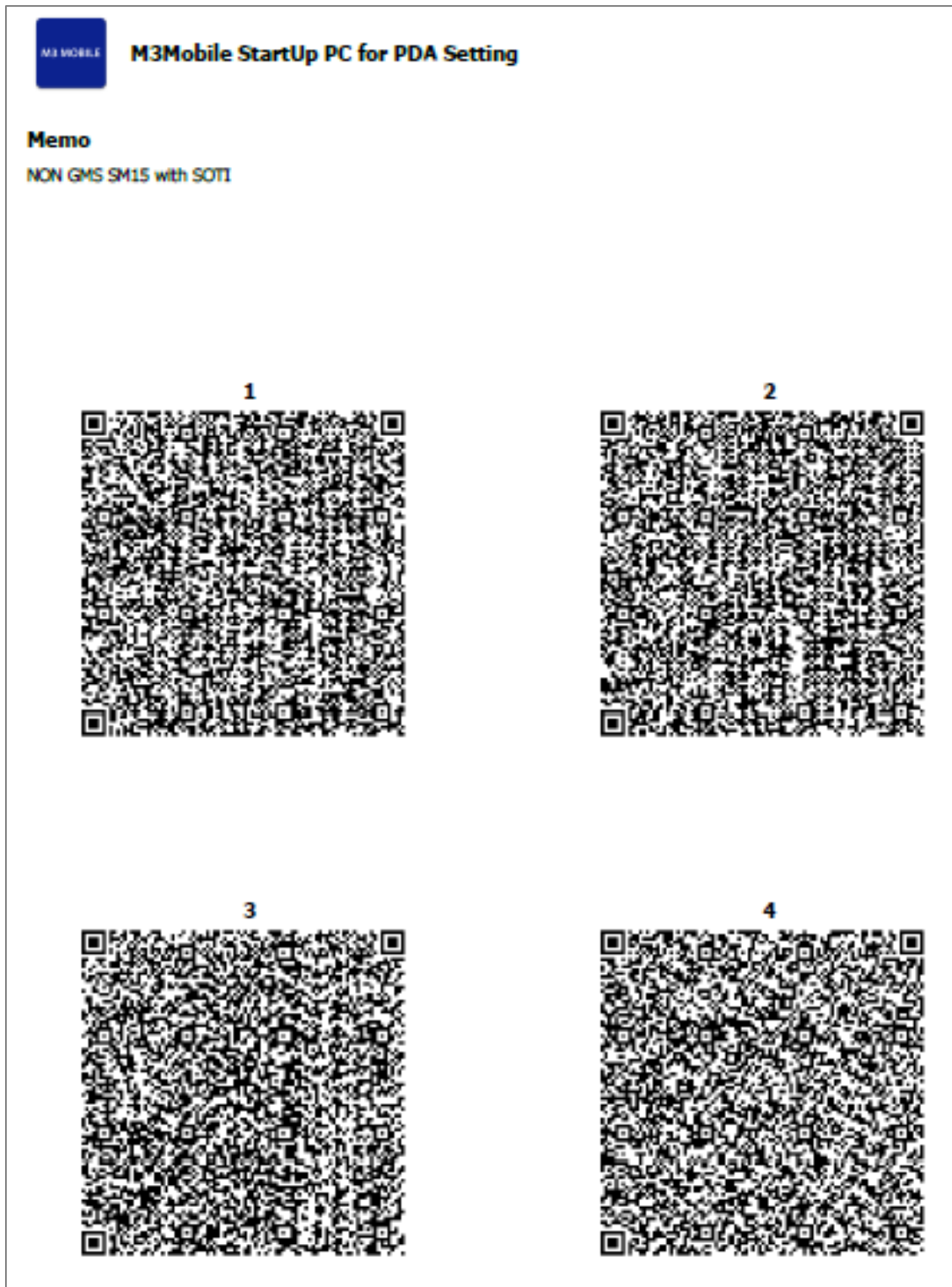
- Settings – Enroll a device owner
- Check the Enable
- Enter the Package Name of the Soti.
- Enter the Class Name of Device Admin Adapter.
- Automatic filling is possible with 'Autofill to SOTI AE'.

1.9 Export Barcodes



- Profile Management – Export Barcodes
- Enter the Memo.
- Click the PDF button to print the Barcodes as PDF.

- The PDFs printed are as follows:



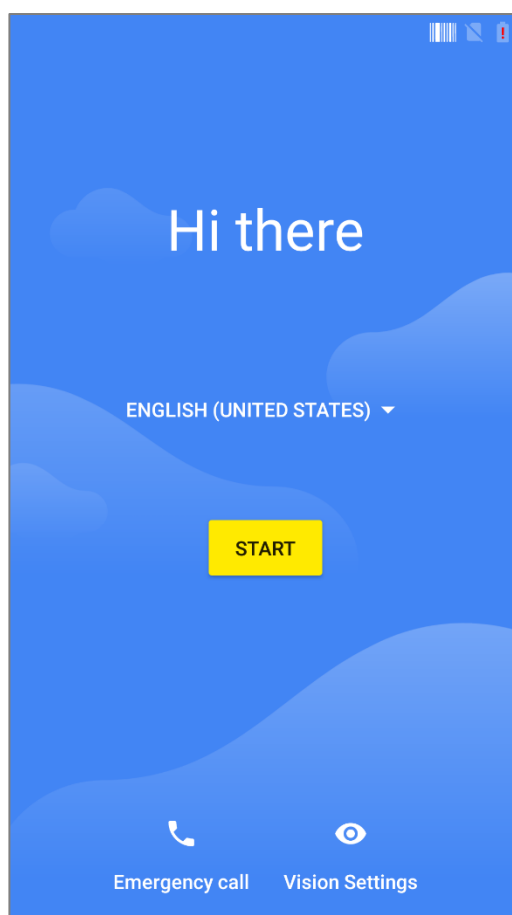
2. SET NEXT STEP USING STARTUP APP

How to use StartUp APP for Soti setup on a factory reset state.

2.1 Device boot

Please refer to chapter 3 for the guide for factory reset setting.

2.2 Wait 20 seconds in Setup Wizard state



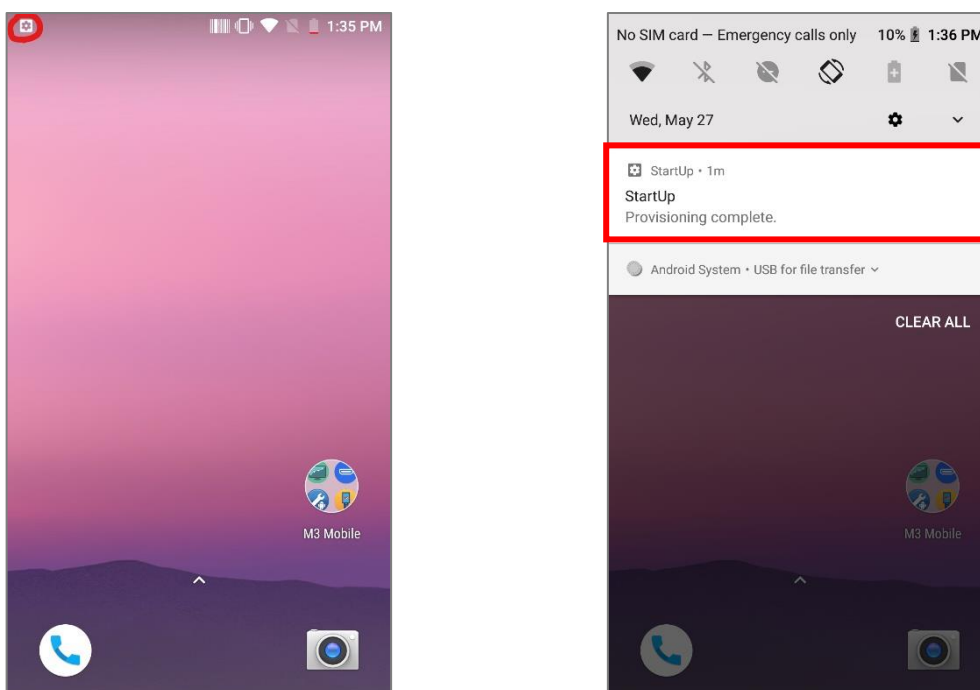
Scanner will be activated for the first 10 seconds and ready to accept Barcodes in the StartUp App for the next 10 seconds.

2.3 Read all output StartUp Barcodes

Read StartUp Barcodes in steps 1-9 directly from the Setup Wizard screen in steps 2-2.

2.4 Wait until setup is complete

- When you read StartUp Barcodes, you will be connected to Wi-Fi and enter the device's default Launcher screen.



- When you enter the launcher screen, it will be shown as shown above.
- You cannot enter Setting until you are done and be careful not to press the Home button.
- Depending on the network environment, sufficient time is required to download and install mobicontrol.

2.5 Run Soti to verify the settings

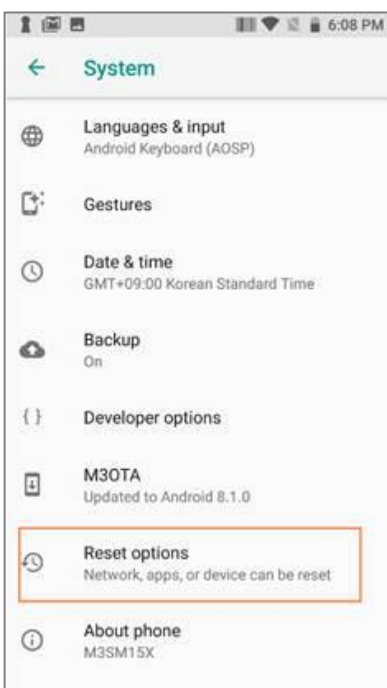
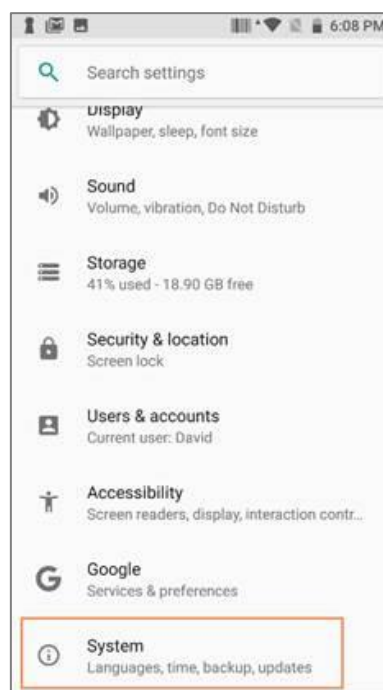
- Please run the SOTI to determine the setting value.

3. REBOOT/FACTORY RESET

3.1 Use the Setting Menu

Please navigate to Settings >> System >> Reset Options >> Erase all data(factory reset)

Note. Please remove the Google Account from the Device OS



3.2 Use the Hidden Menu

- Power off the device completely by pressing long power button.
- Pressing Volume Up button and press the power button at the same time until you can feel the vibration from the device.
- Then you will see the below Status from the device.
- On this status, please pressing the power button and press the volume up key at the same time until you can see the below image.
- This is the recovery mode.

